






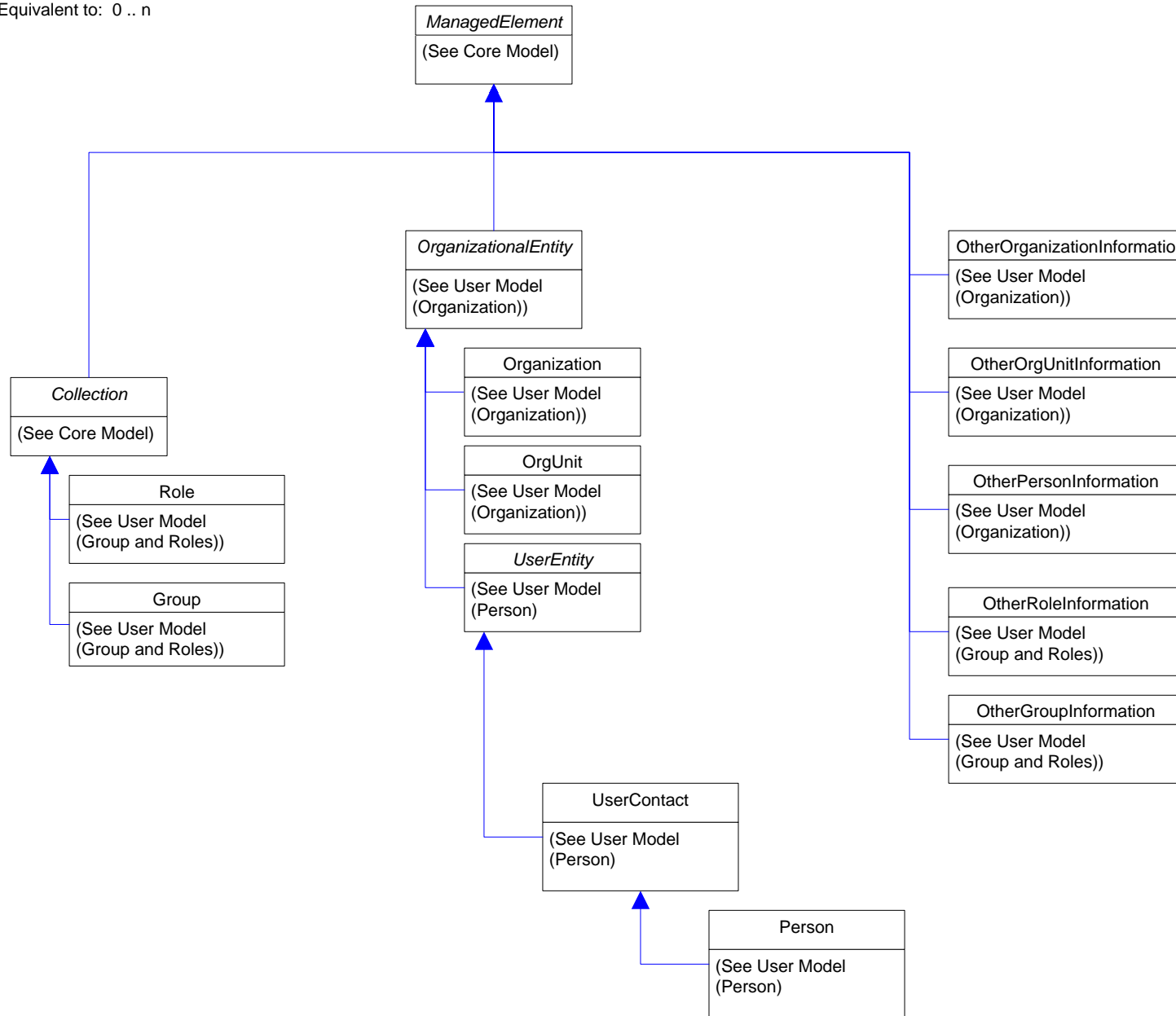
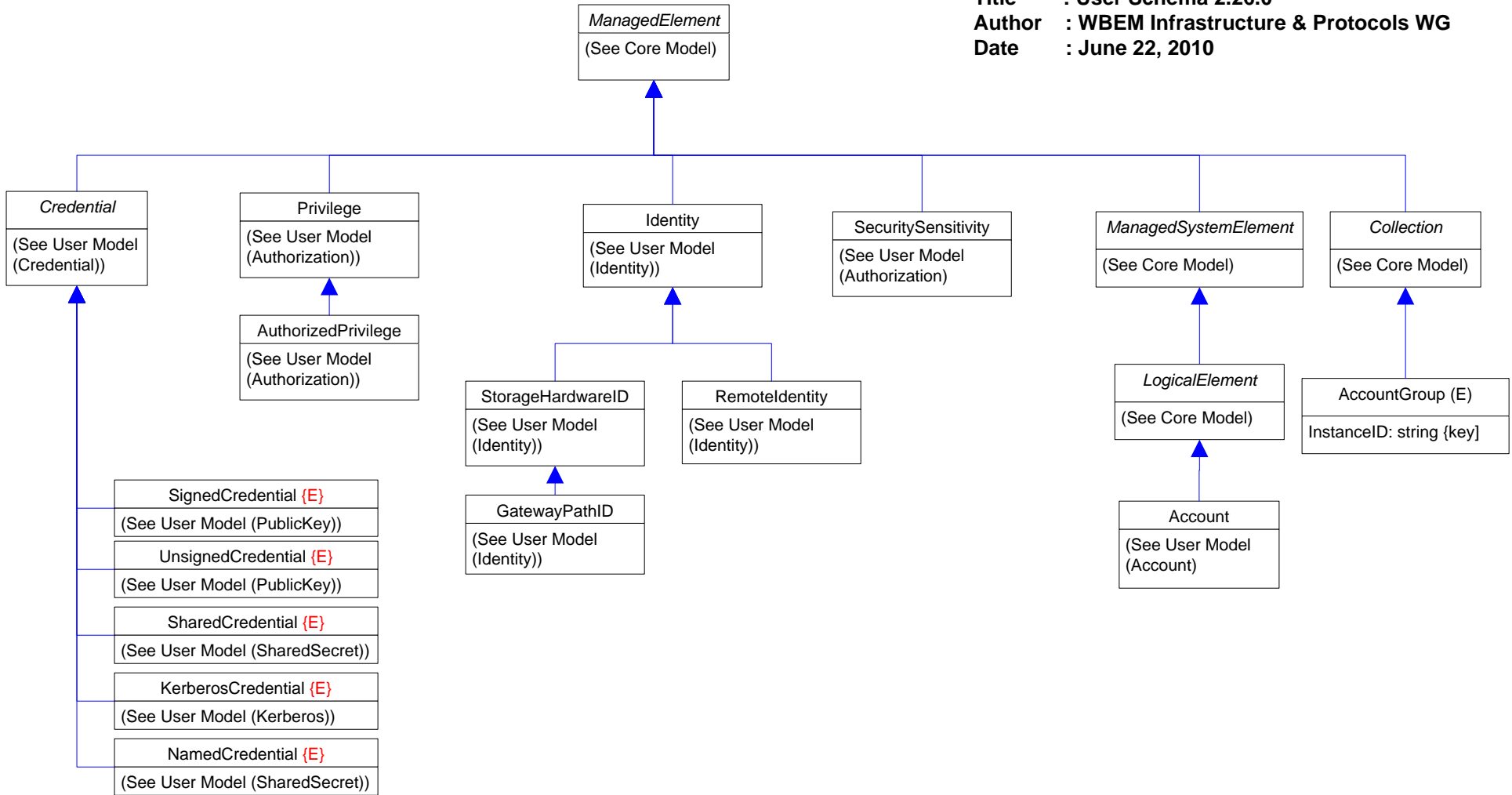
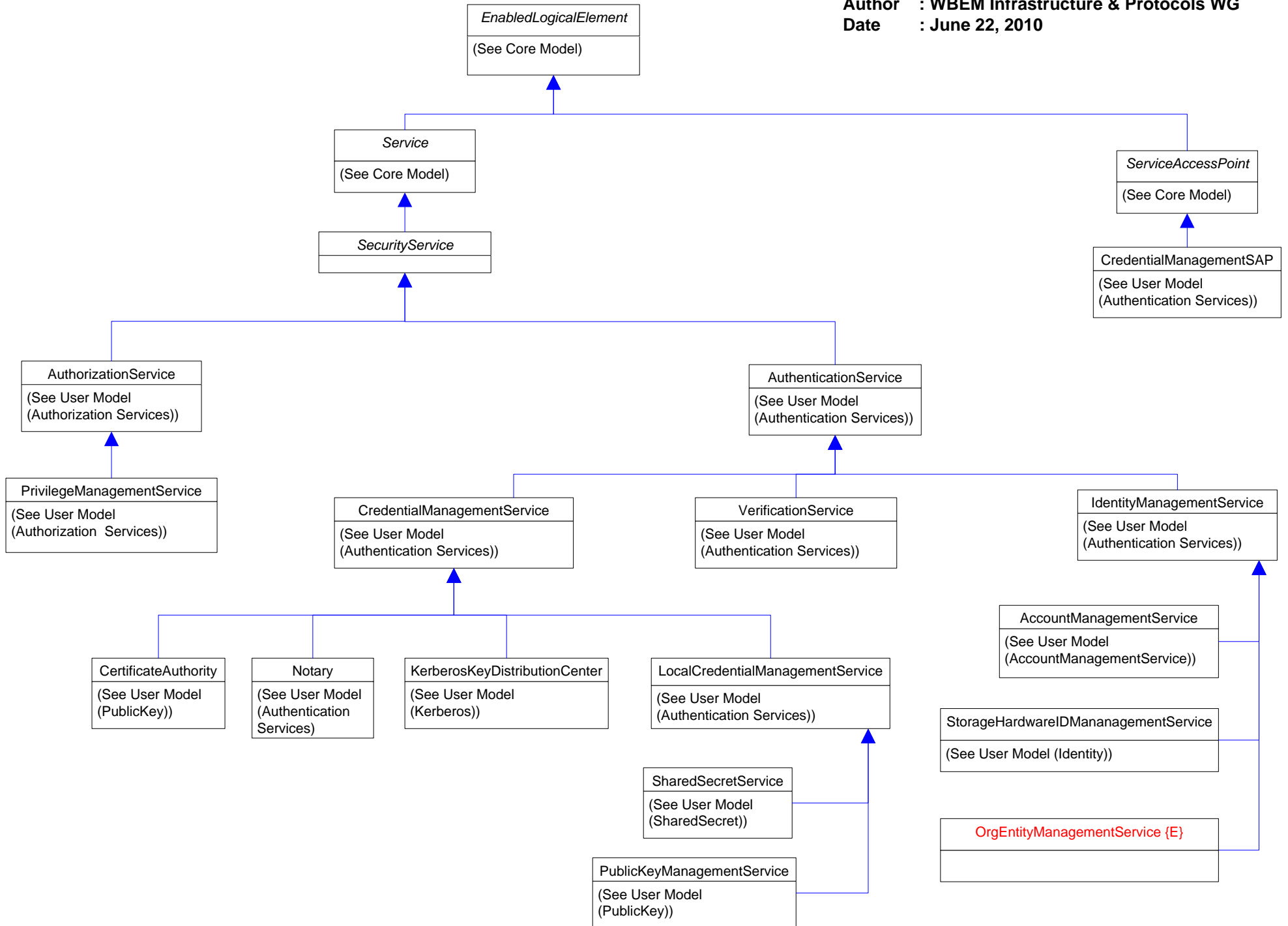
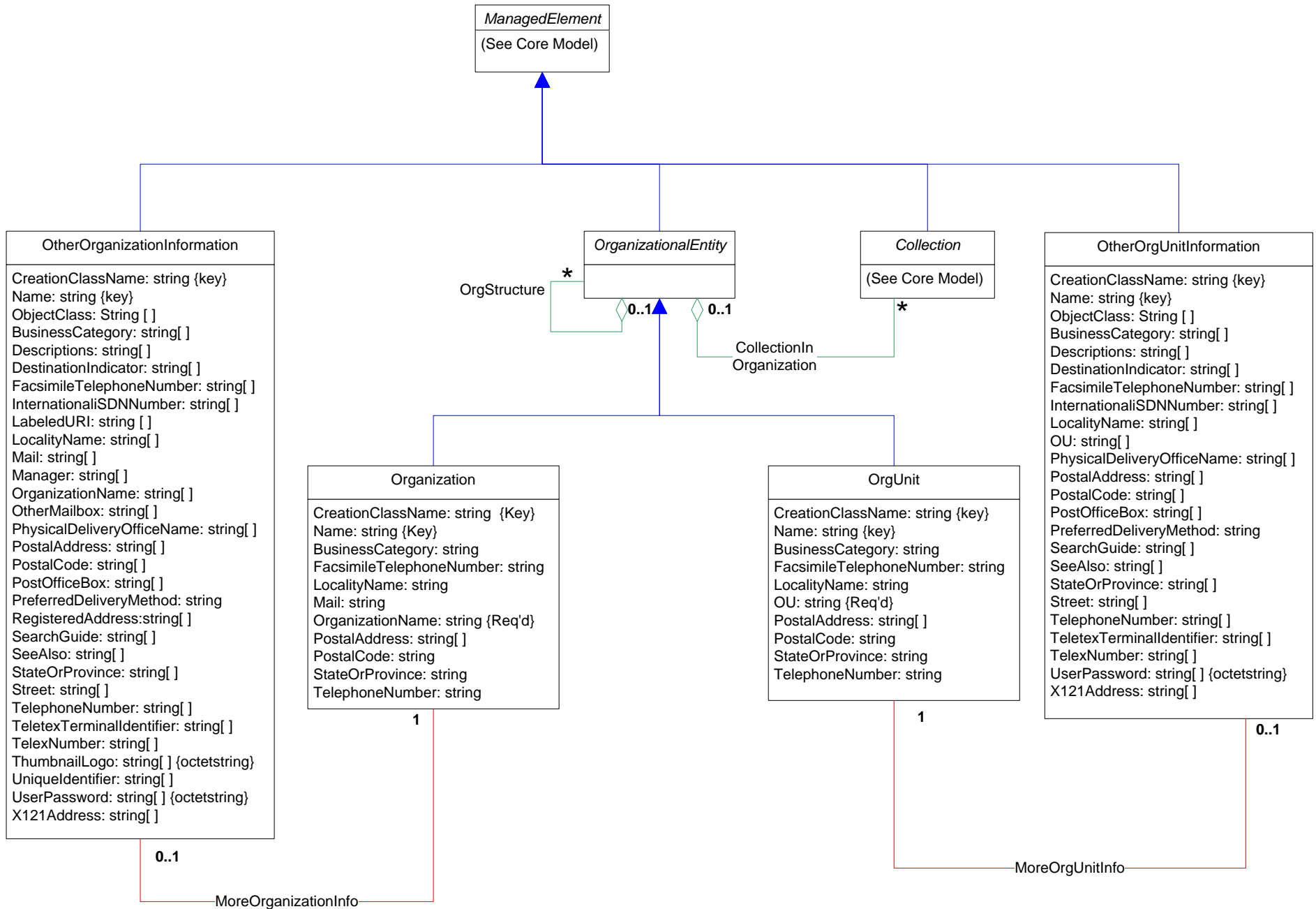


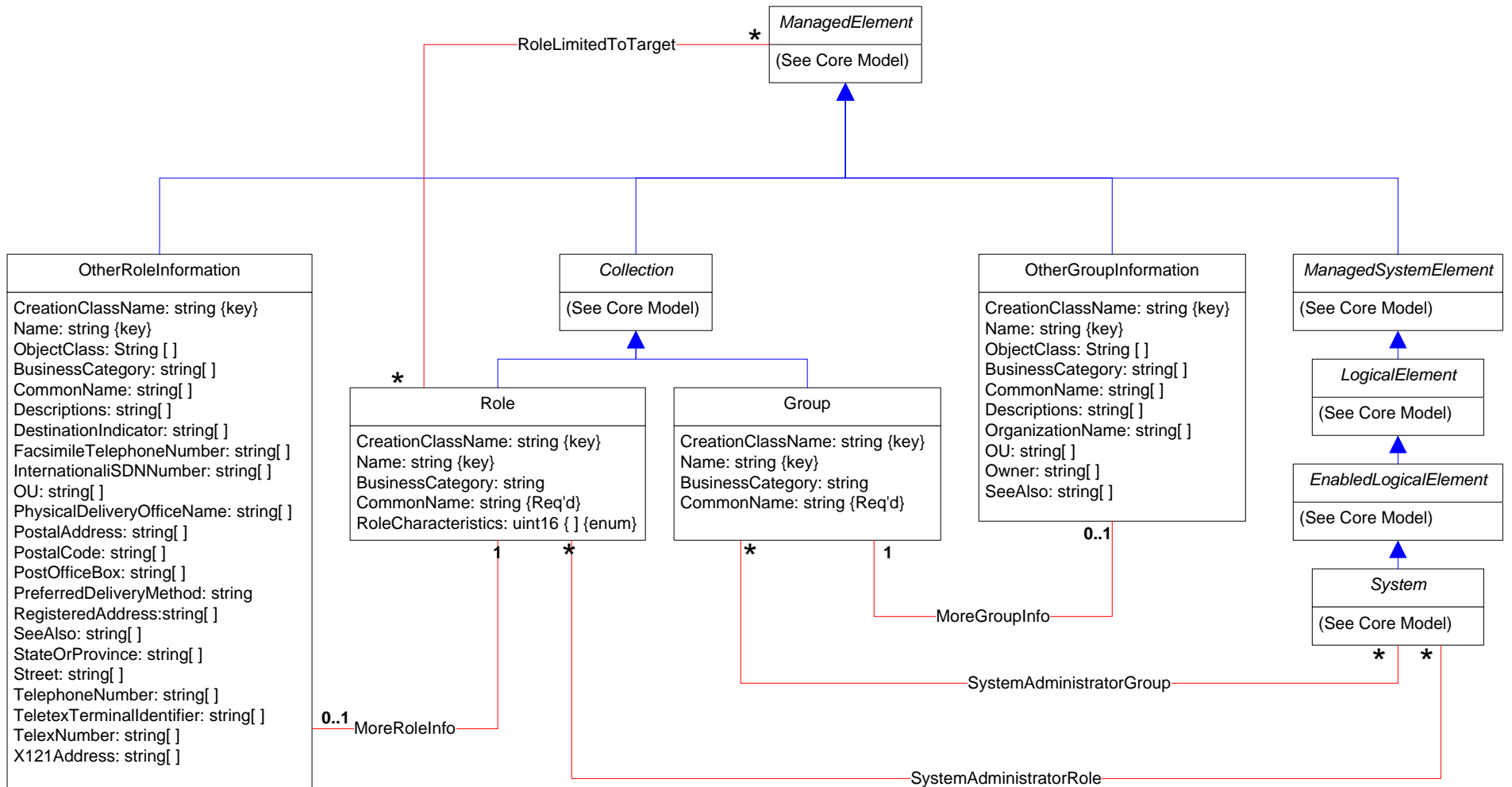
-  Inheritance
-  Association
-  Association with WEAK reference
-  Aggregation
-  Aggregation with WEAK reference
-  Composition Aggregation
-  Equivalent to: 0 .. n

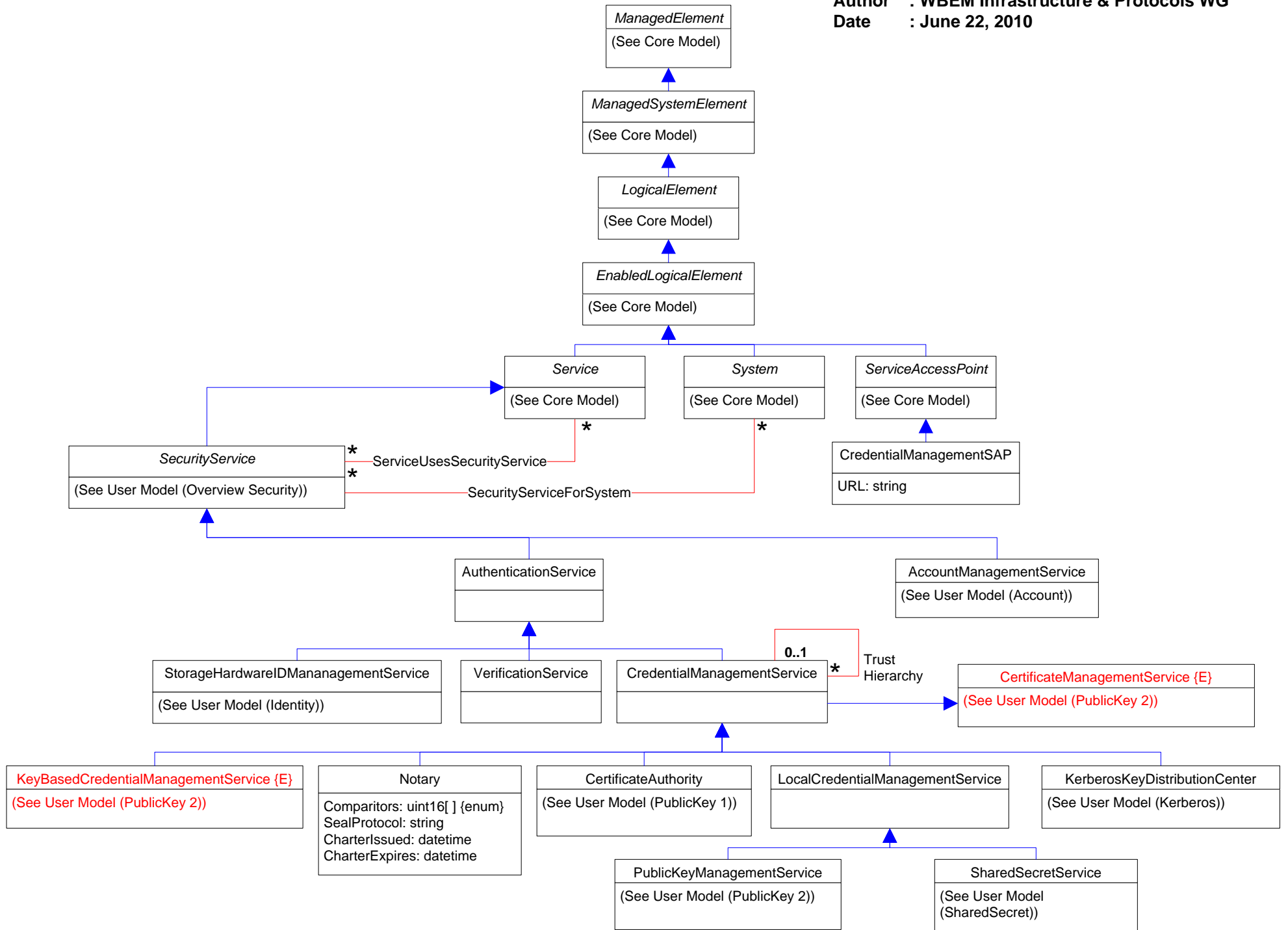


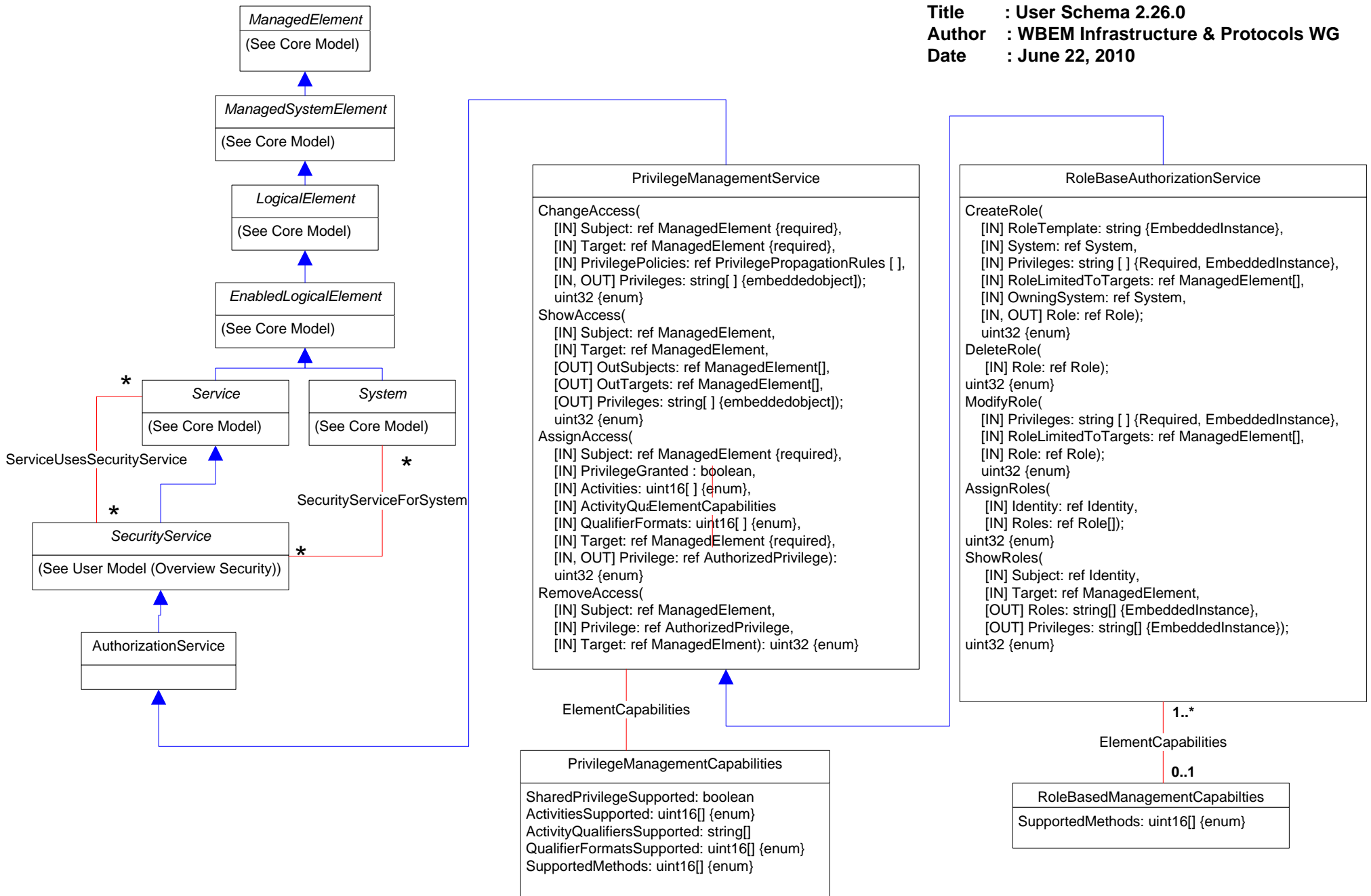


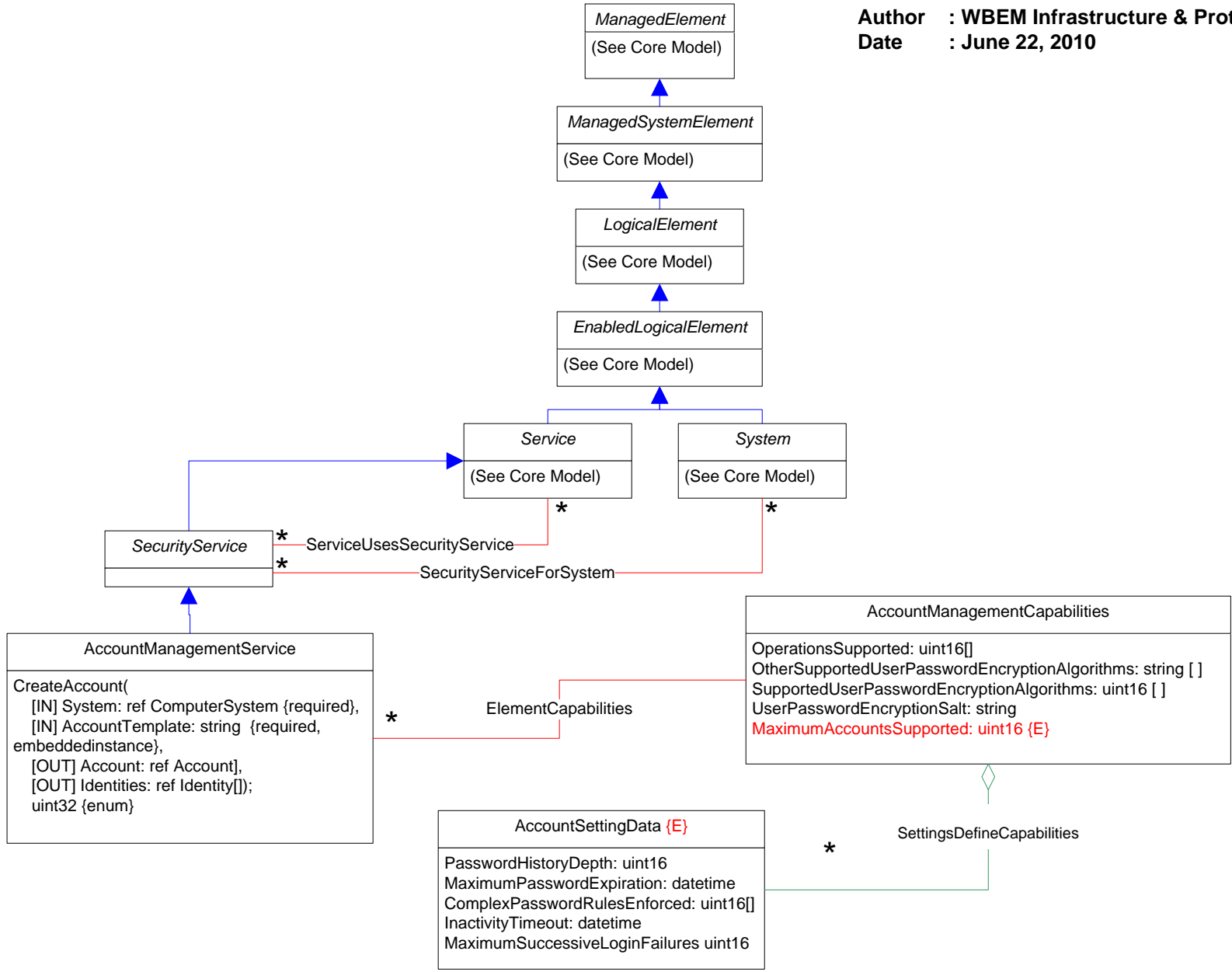


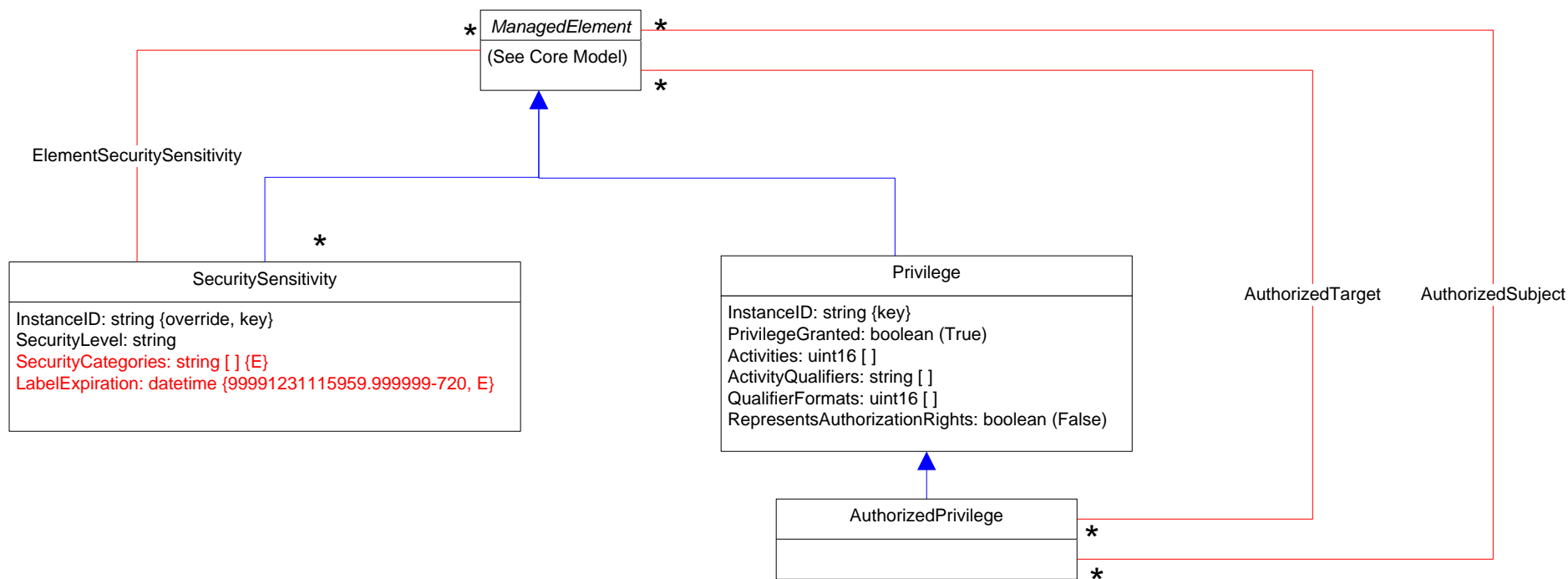


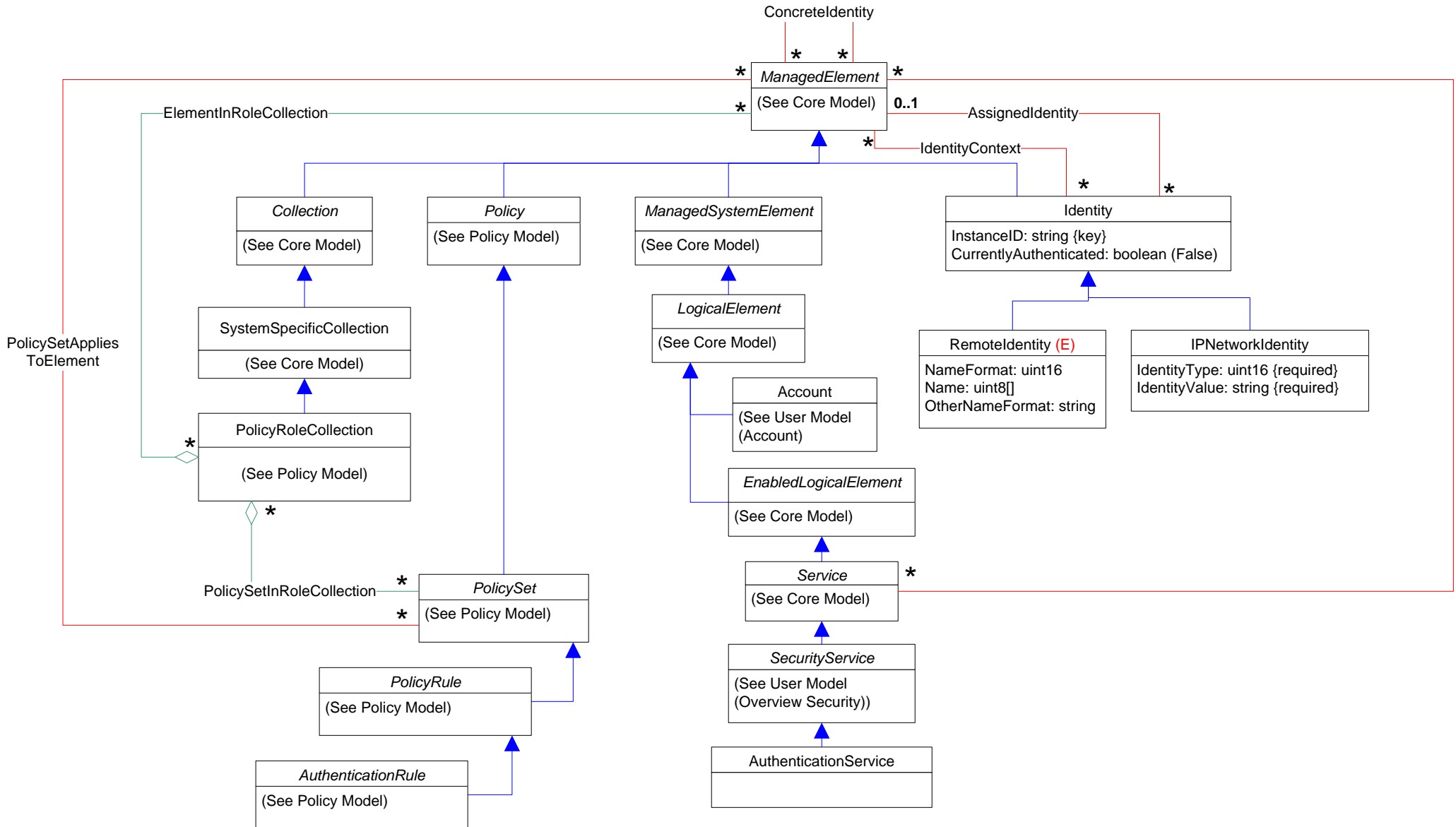


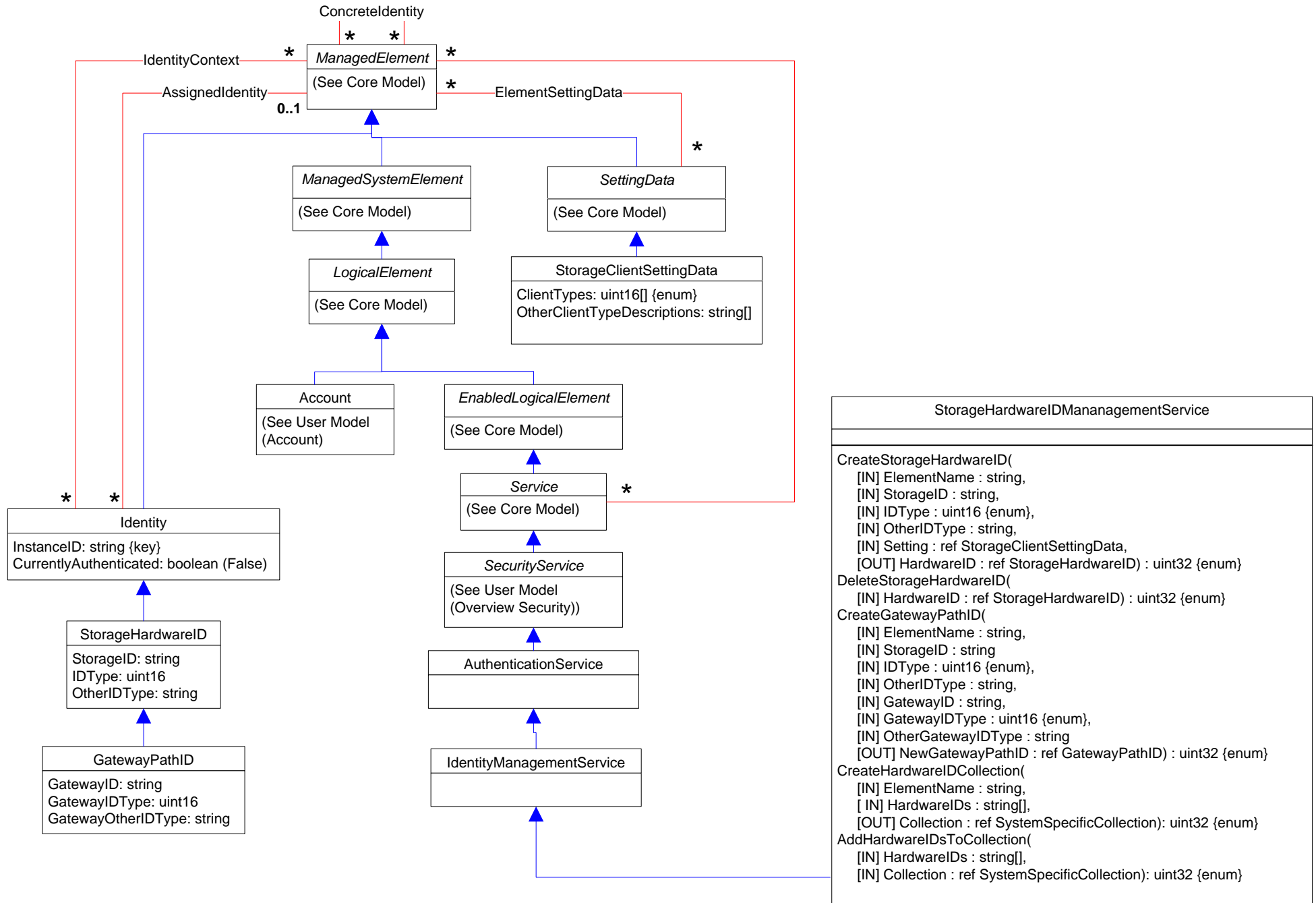


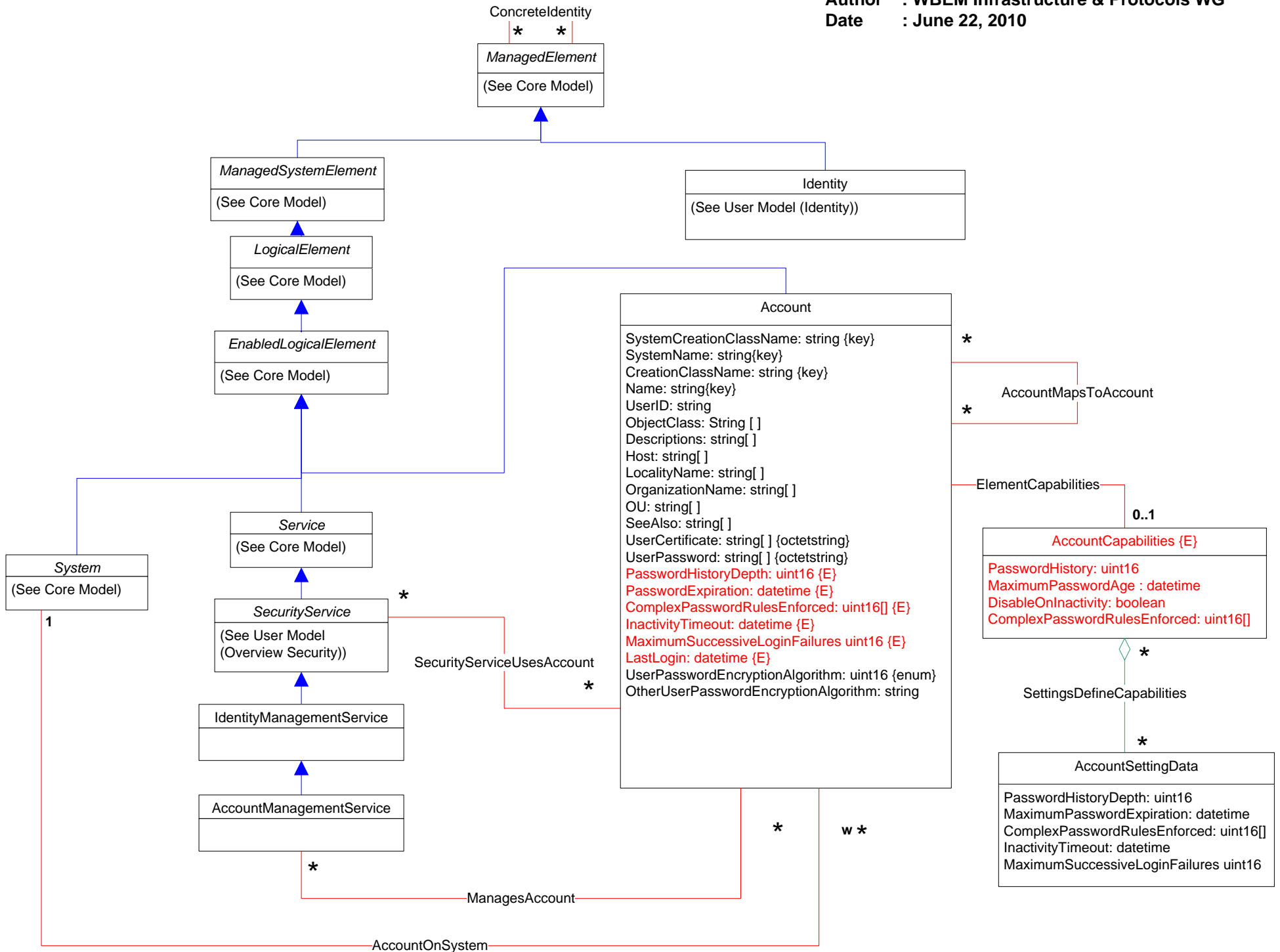


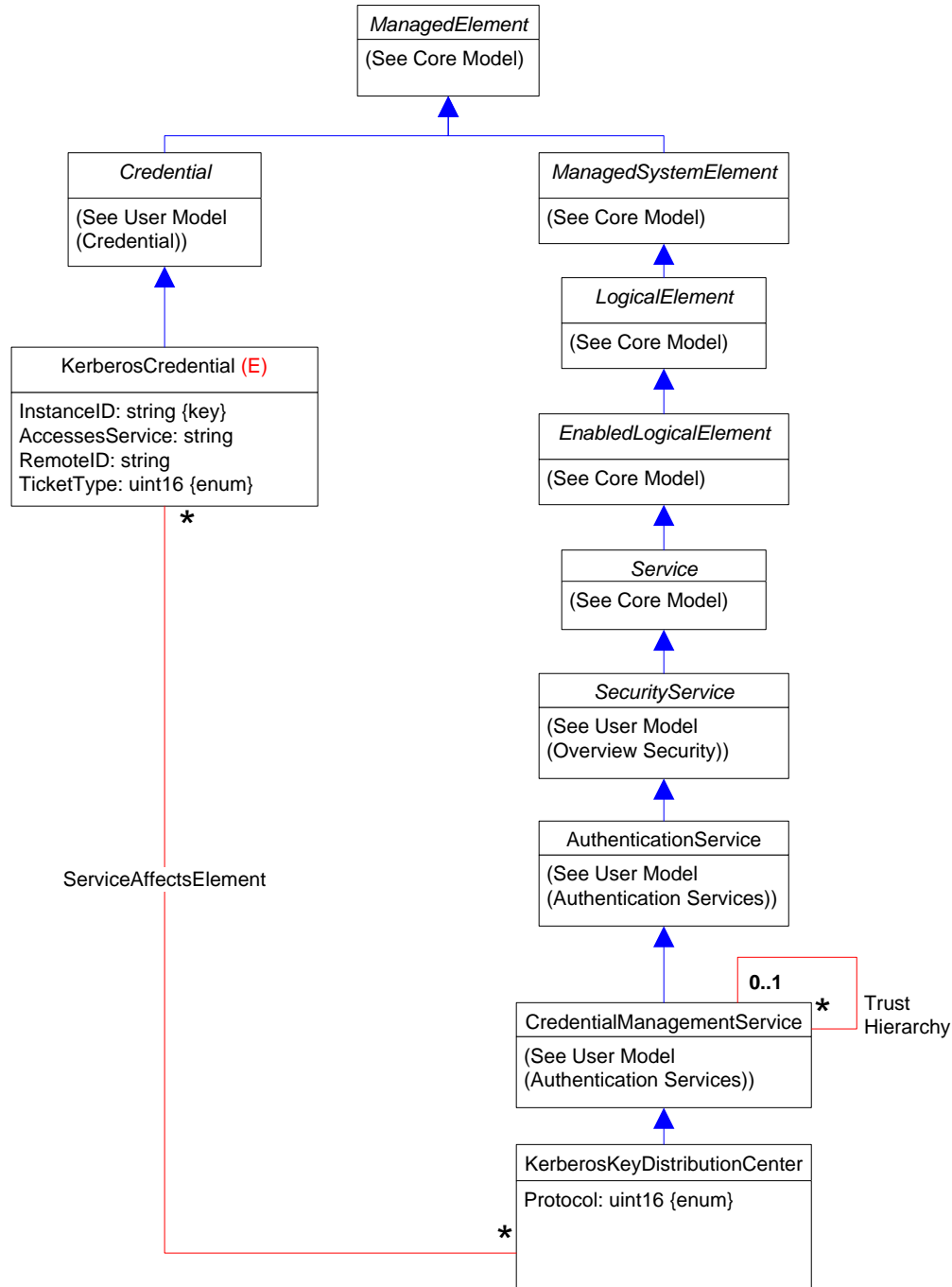


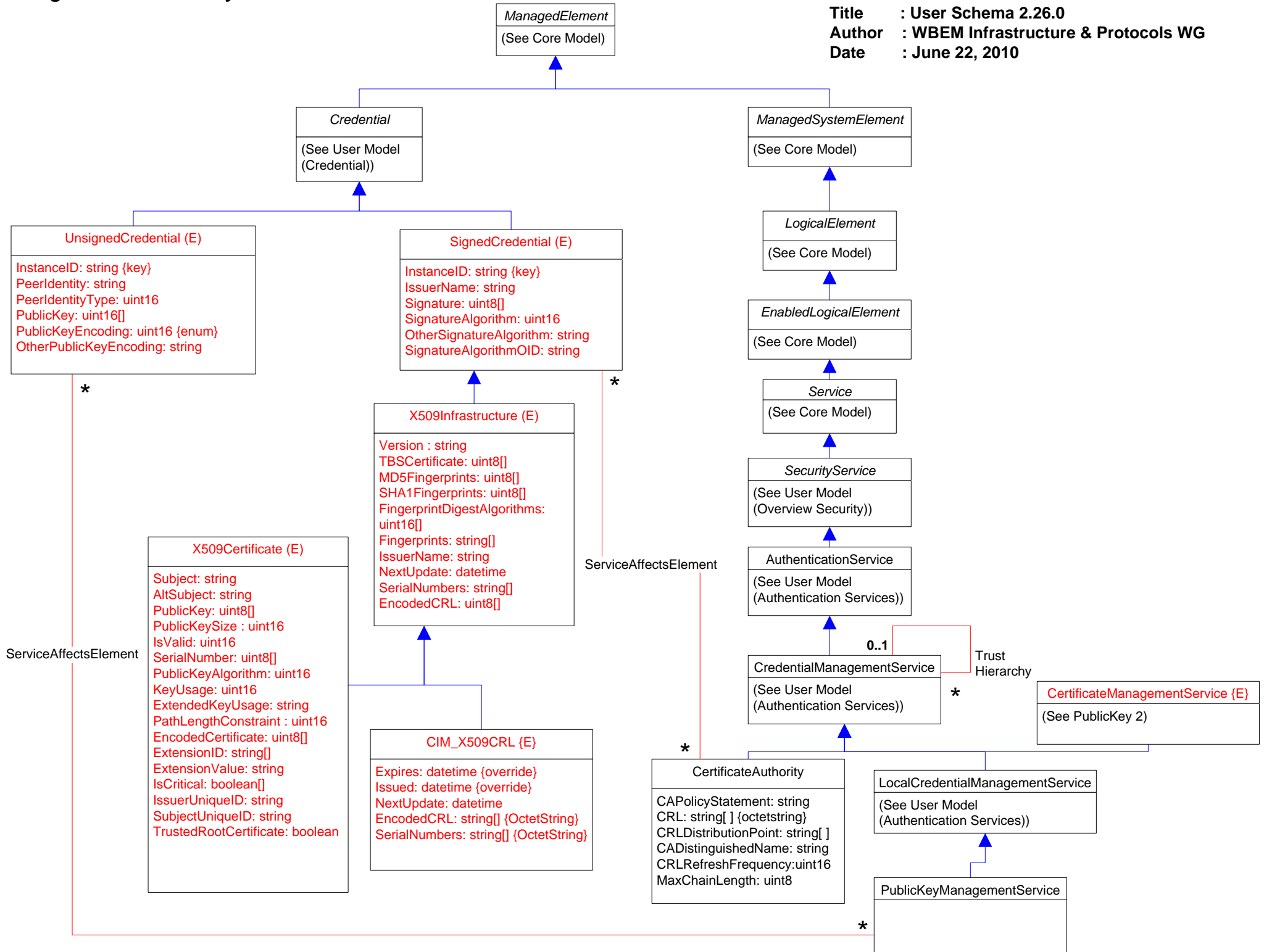


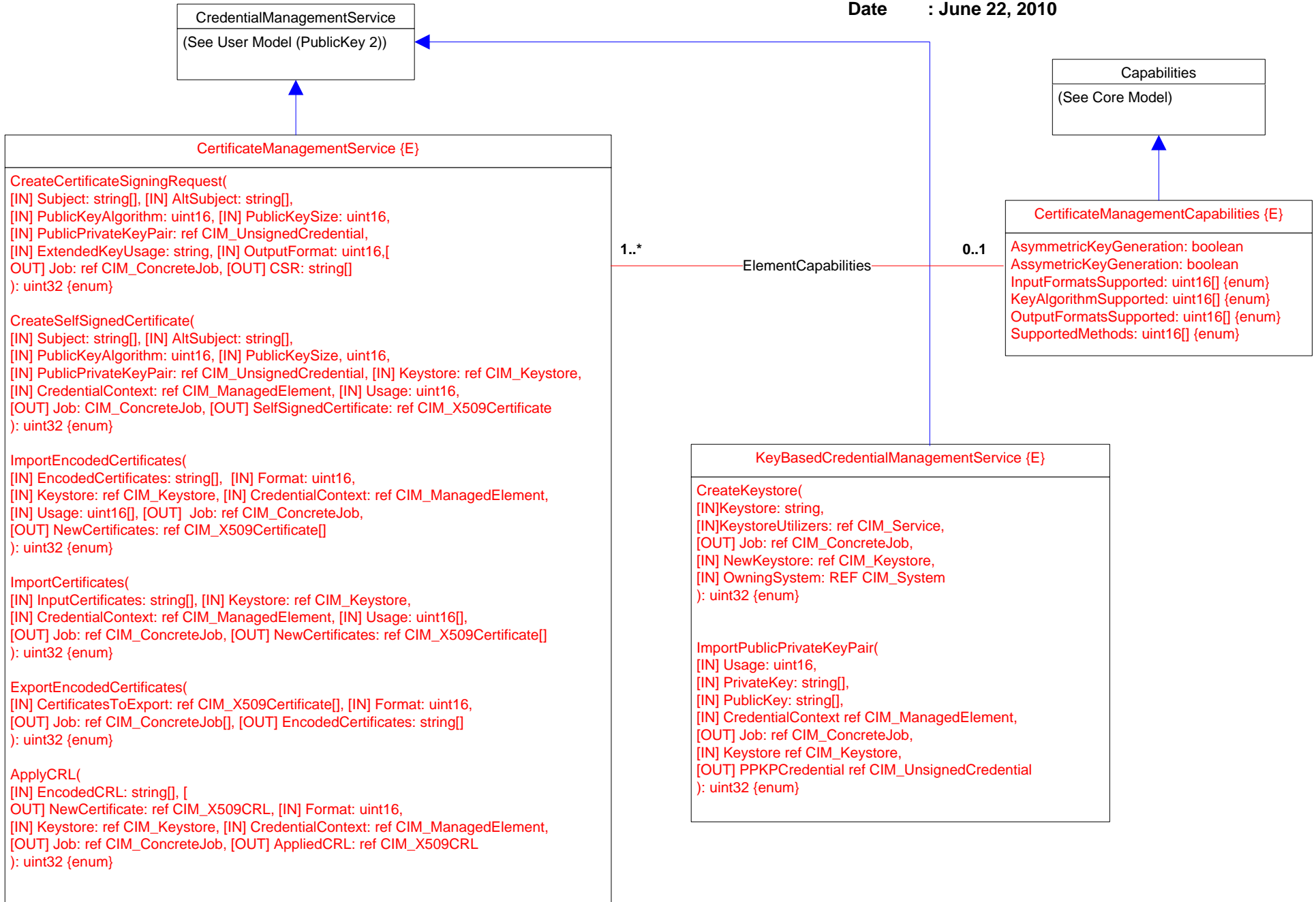


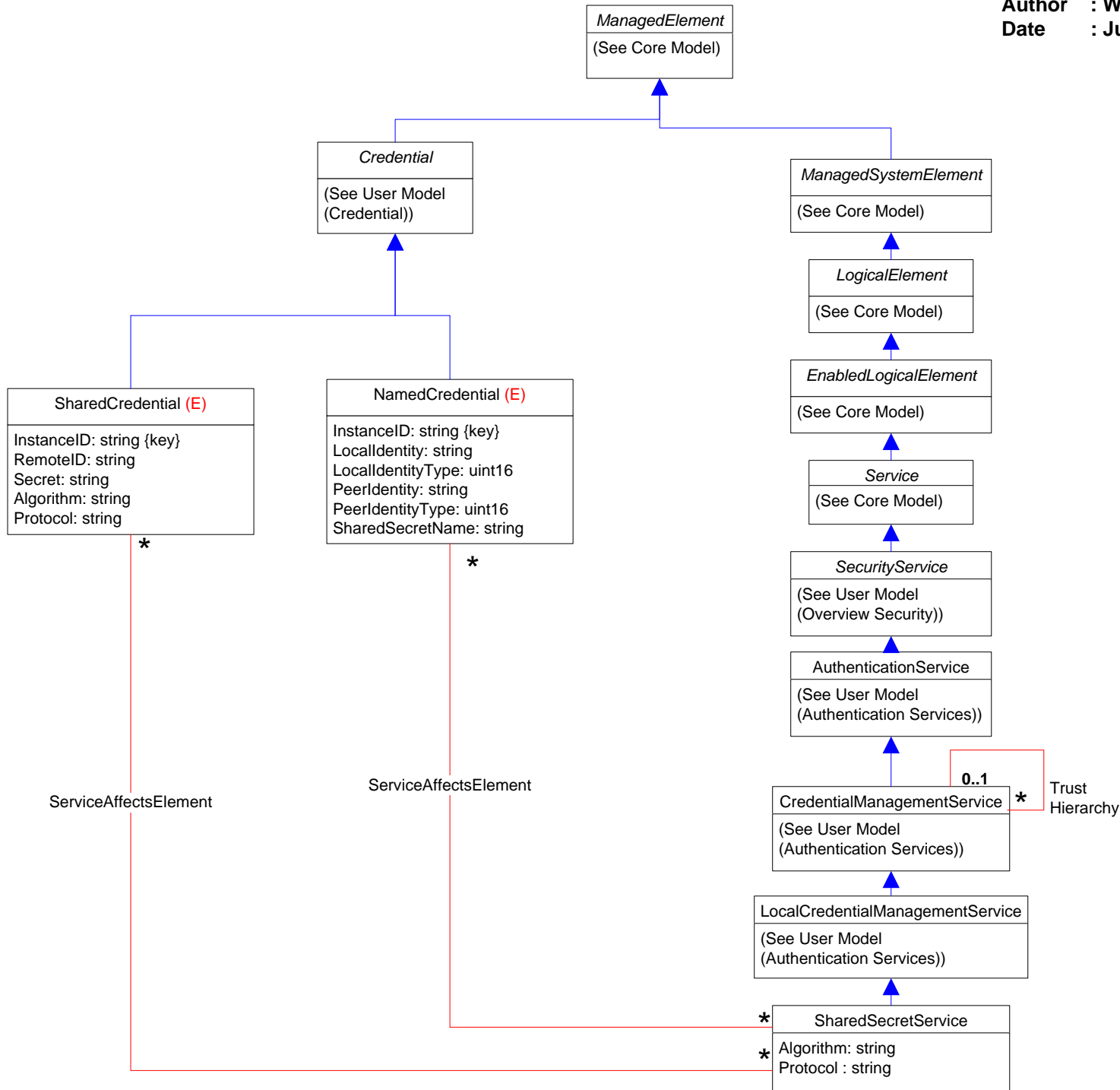


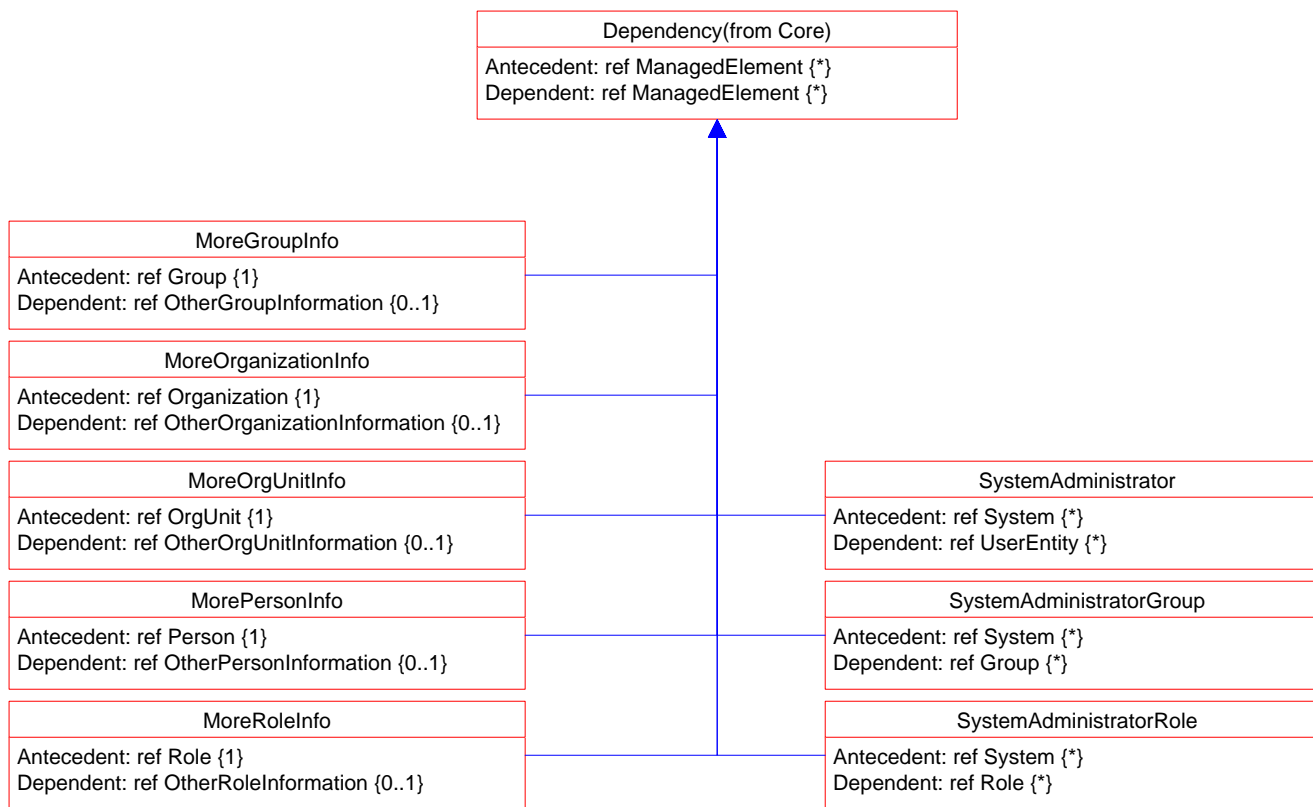


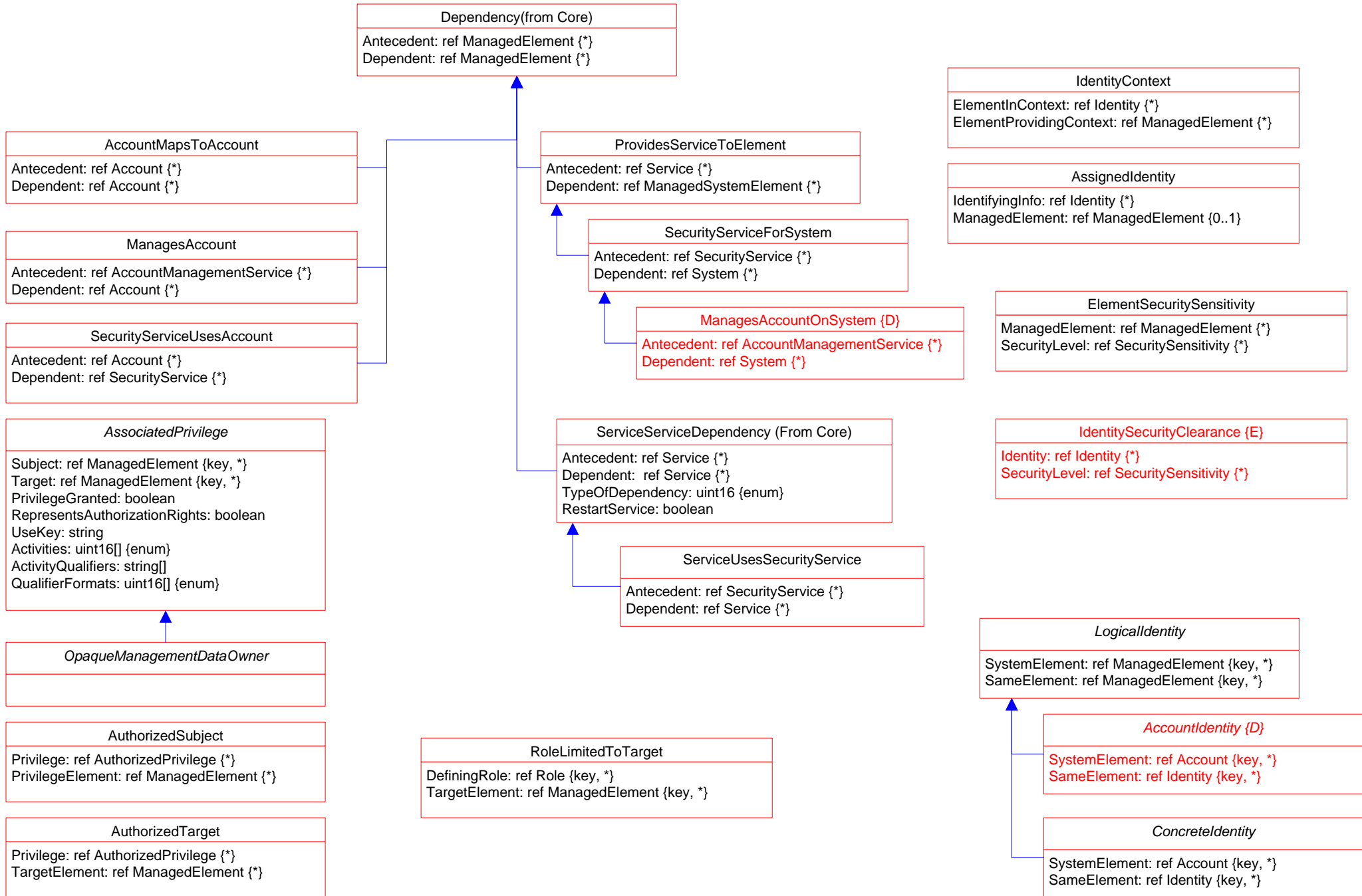


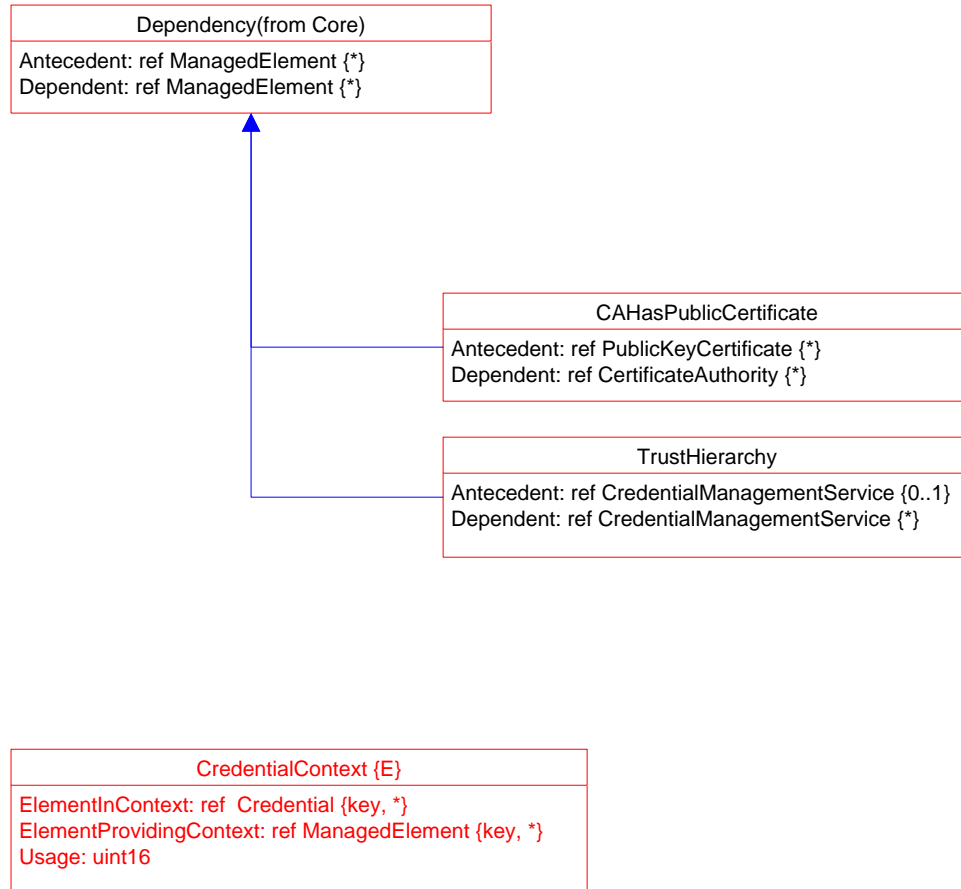


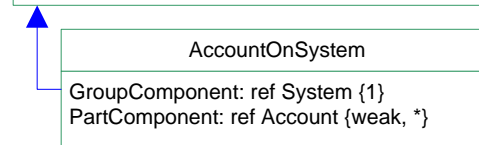
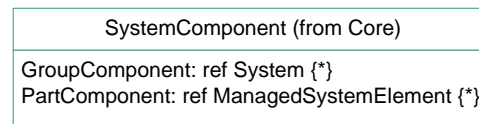
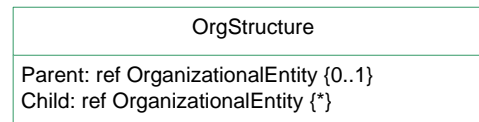
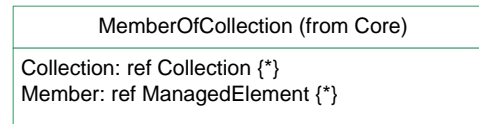
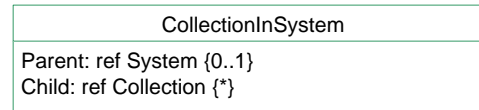
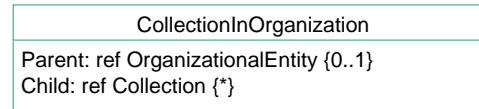


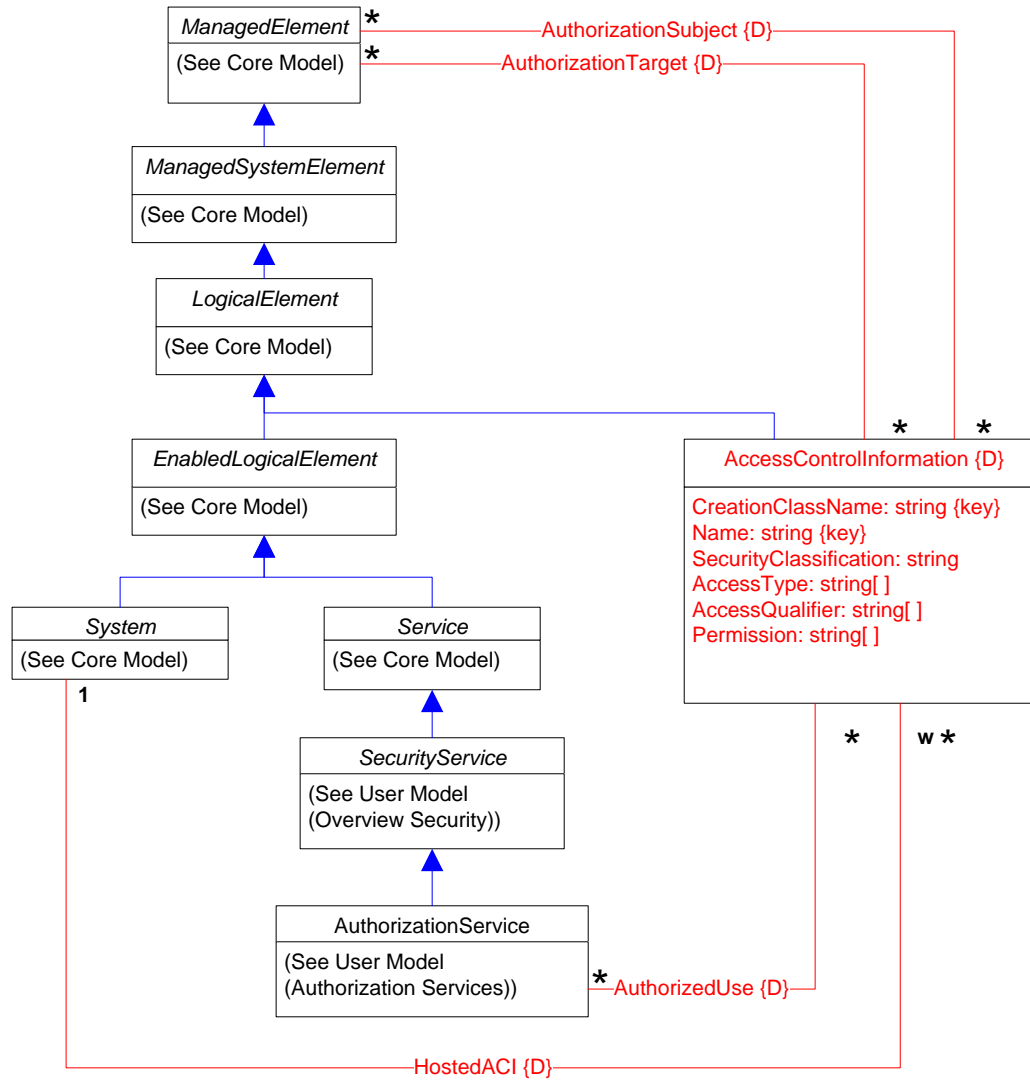


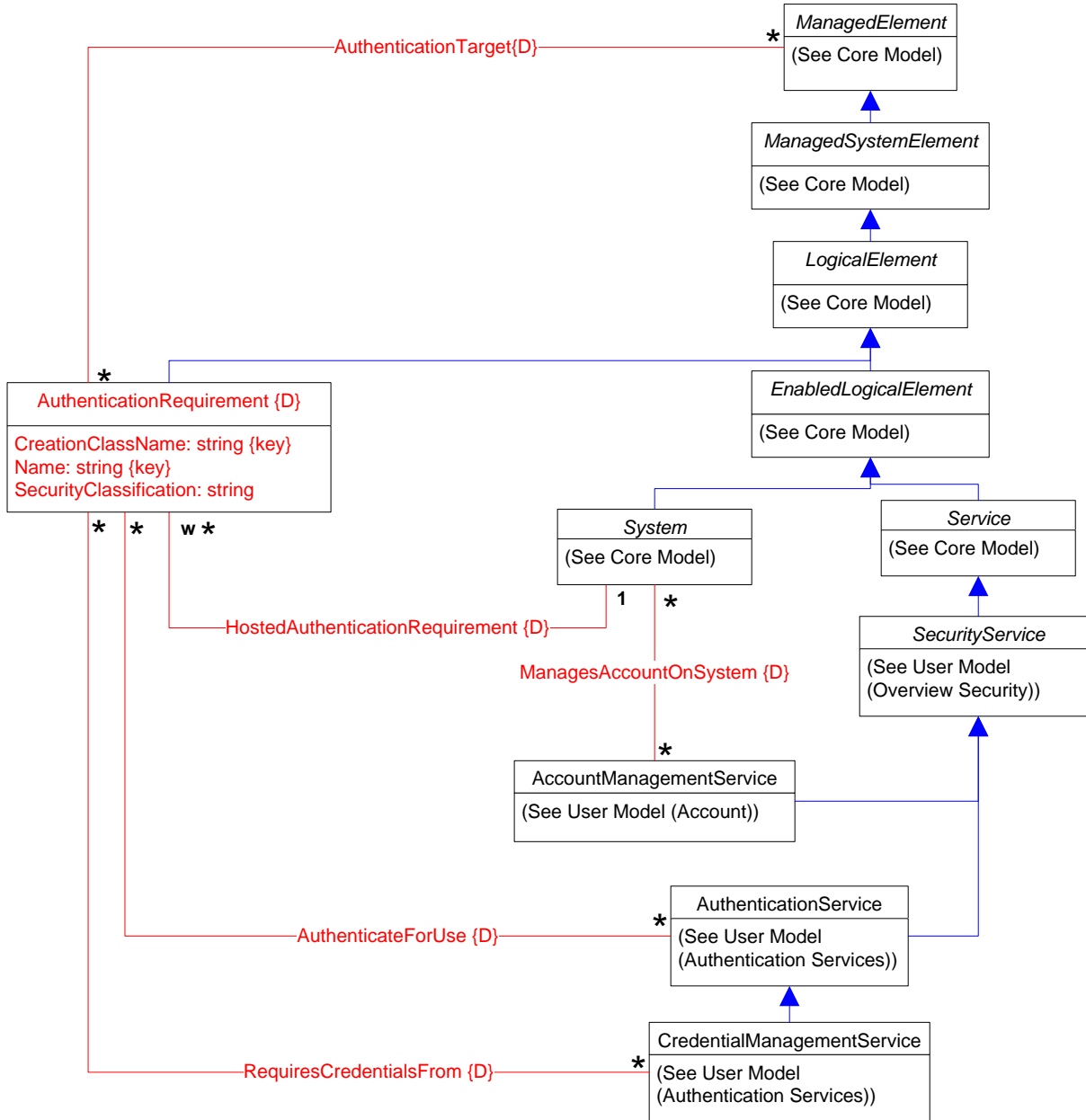


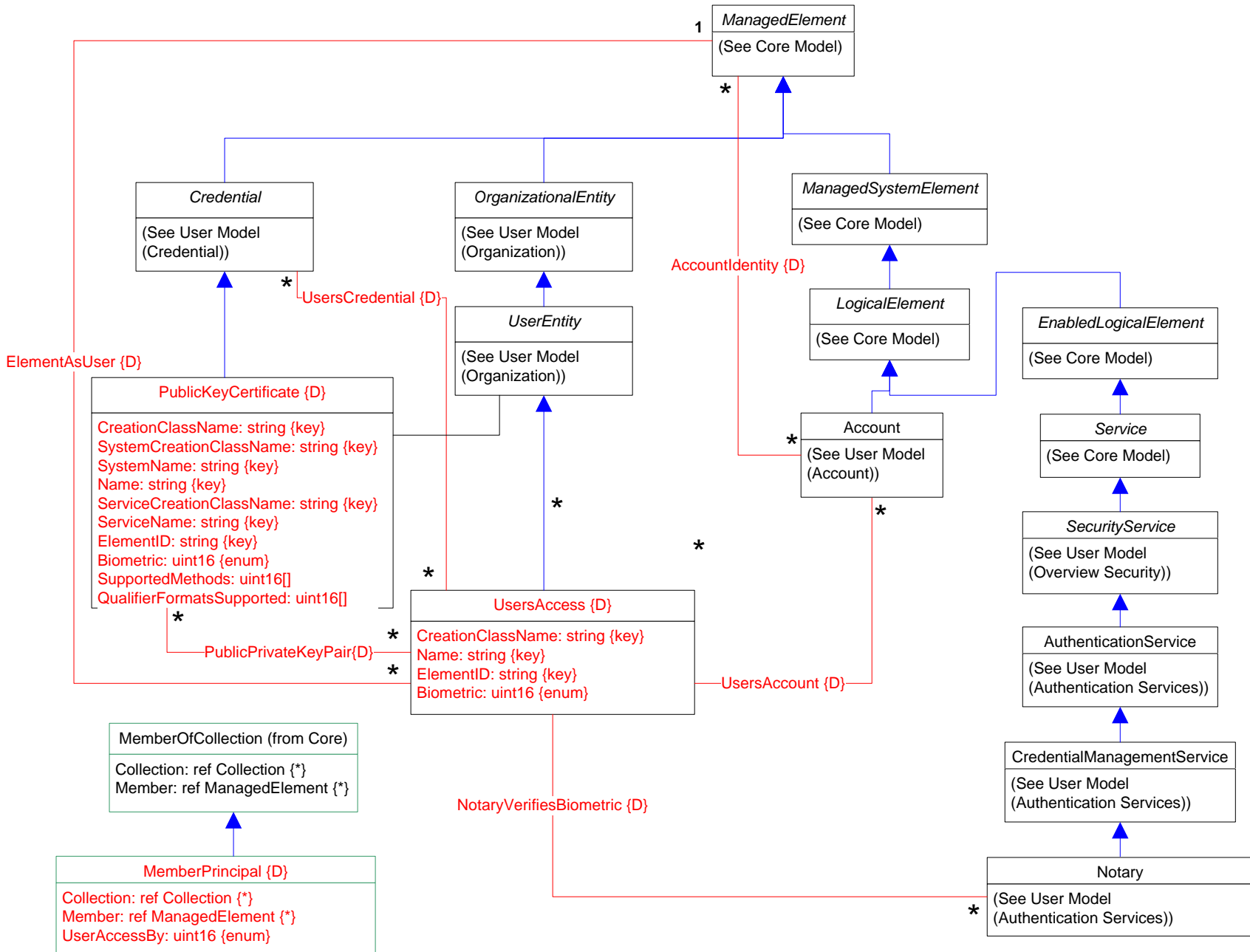


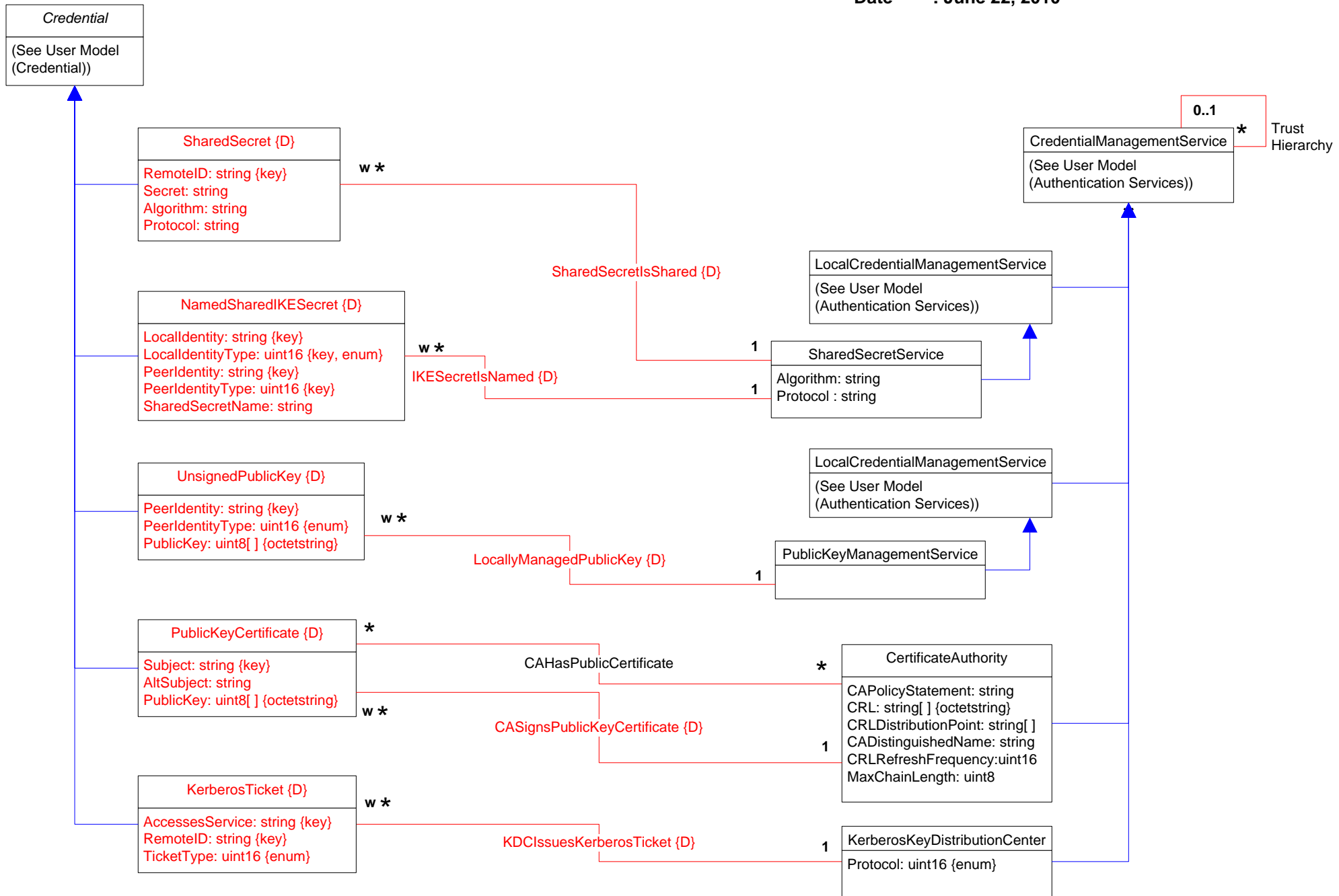


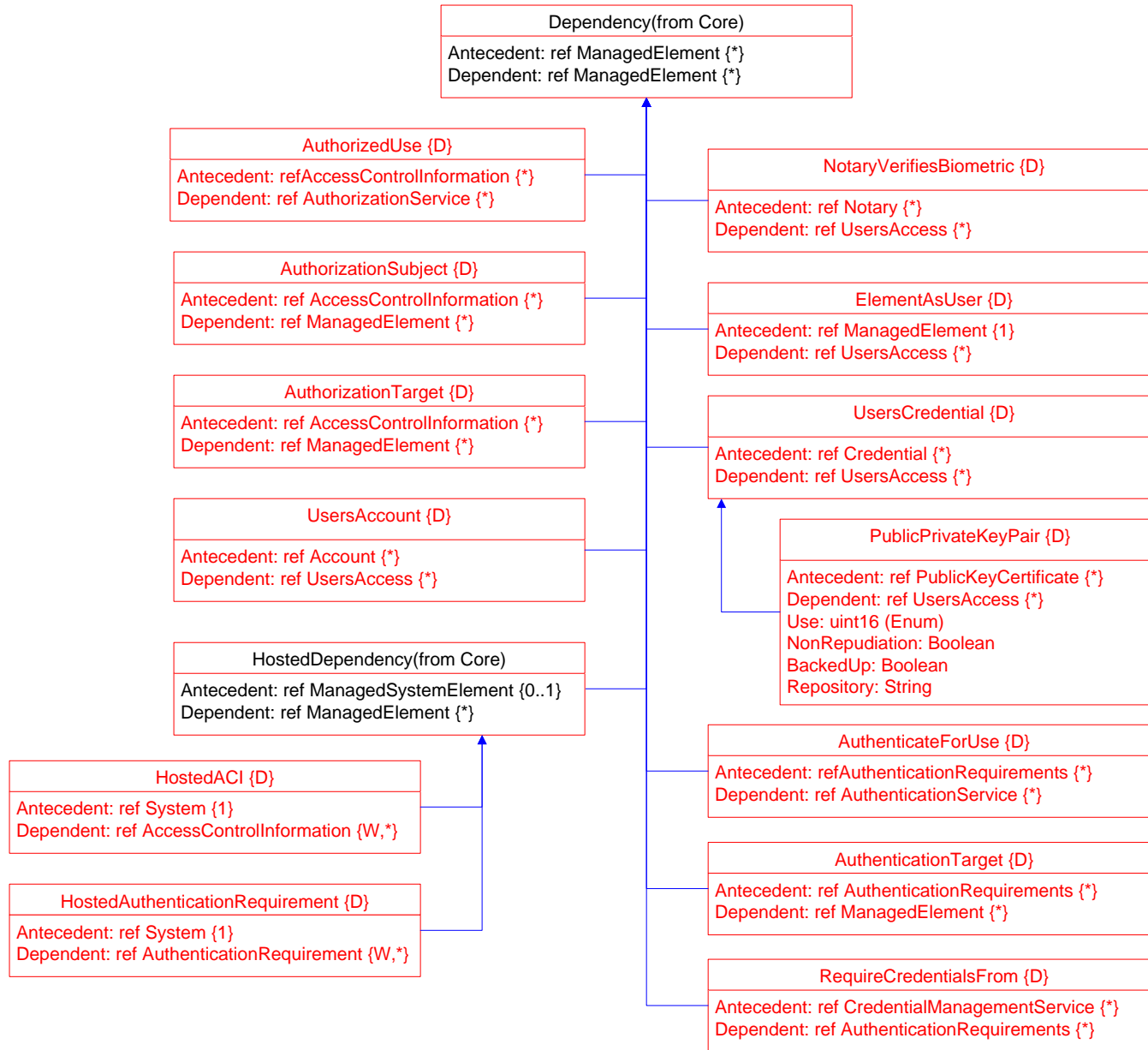


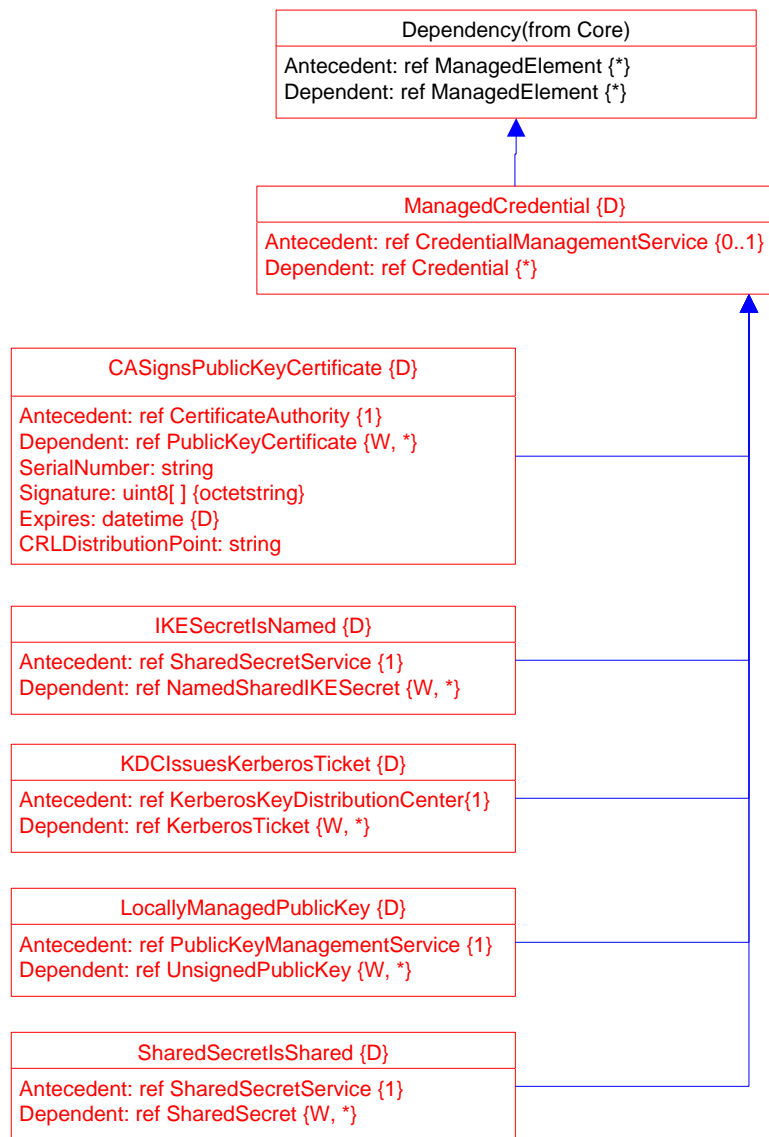












Version 2.9 Preliminary

- * DMTFCR01222: Add CredentialContext
- * DMTFCR01302: Add RoleLimitedToTarget
- * DMTFCR01342: Add Privilege.QualifierFormats.SCSI Command
 - Add Privilege.RepresentsAuthorizationRights
 - Add PrivilegeManagementService.ChangeAccess()
 - Add PrivilegeManagementService.ShowAccess()
- * DMTFCR01380 Clarification of CredentialContext

Version 2.10:

CIM_AccountGroup

<change cr="DMTFPCR01083" type = "new"> Add PrivilegeManagementCapabilities </change>

<change cr="DMTFPCR01501" type = "new"> Create AccountGroup and Define relationship to ChangeAccess, ShowAccess, Roles, and authorizationPolicy. </change>

CIM_AccountIdentity

<change cr="DMTFPCR01503" type = "deprecate"> Deprecate

AccountIdentity, SecurityServiceForSystem, ManagesAccountOnSystem, and ServiceUsesSecurityService </change>

CIM_CollectionInSystem

<change cr="DMTFPCR01502" type = "deprecate"> Deprecated CollectionInSystem in favor of OwingCollectionElement </change>

<change cr="DMTFPCR01145" type = "deprecate"> Deprecated CollectionInSystem in favor of HostedCollection </change>

CIM_Credential

<change cr="DMTFPCR01514" type = "change"> Fix description of timestamp in Credential </change>

CIM_CredentialContext

<change cr="CIMCoreCR00750" type = "change"> Clarification of CredentialContext </change>

<change cr="DMTFPCR01379" type = "new"> Add Credential Context </change>

<change cr="DMTFPCR01222" type = "new"> Define a CredentialContext association </change>

CIM_GatewayPathID

<change cr="DMTFPCR01299" type = "change"> Add iSCSI support to the enum of ID Types used for SCSI LUN Masking </change>

CIM_Group

<change cr="DMTFPCR01515" type = "change"> Clarify intended use for LDAP, not general </change>

CIM_IdentityContext

<change cr="DMTFPCR01380" type = "change"> Clarify IdentityContext cardinalities </change>

CIM_ManagesAccountOnSystem

<change cr="DMTFPCR01503" type = "deprecate"> Deprecate AccountIdentity, SecurityServiceForSystem, ManagesAccountOnSystem, and ServiceUsesSecurityService </change>

CIM_Privilege

<change cr="DMTFPCR01547" type = "change"> Fix enumeration conflict generated by DMTFPCR01442 </change>

<change cr="DMTFPCR01342" type = "change"> Change and Show Access Rights </change>

PrivilegeManagementCapabilities

<change cr="DMTFPCR01083" type = "new"> Add PrivilegeManagementCapabilities </change>

CIM_PrivilegeManagementService

<change cr="DMTFPCR01547" type = "change"> Fix enumeration conflict generated by DMTFPCR01442 </change>

<change cr="DMTFPCR01342" type = "change"> Change and Show Access Rights </change>

<change cr="DMTFPCR01083" type = "change"> Add PrivilegeManagementCapabilities </change>

CIM_PrivilegePropagationRule

<change cr="DMTFPCR01342" type = "new"> Change and Show Access Rights </change>

CIM_SecurityServiceForSystem

<change cr="DMTFPCR01503" type = "deprecate"> Deprecate AccountIdentity, SecurityServiceForSystem, ManagesAccountOnSystem, and ServiceUsesSecurityService </change>

CIM_ServiceUsesSecurityService

<change cr="DMTFPCR01503" type = "deprecate"> Deprecate AccountIdentity, SecurityServiceForSystem, ManagesAccountOnSystem, and ServiceUsesSecurityService </change>

CIM_StorageHardwareID

<change cr="DMTFPCR01299" type = "change"> Add iSCSI support to the enum of ID Types used for SCSI LUN Masking </change>

CIM_StorageHardwareIDManagementService

<change cr="DMTFPCR01299" type = "change"> Add iSCSI support to the enum of ID Types used for SCSI LUN Masking </change>

Title : User Schema 2.26.0

Author : WBEM Infrastructure & Protocols WG

Date : June 22, 2010

Version 2.13:

Change:

CIM_StorageHardwareID

Version 2.14:

Change:

CIM_Account

CIM_AssignedIdentity

CIM_StorageHardwareIDManagementService

CIM_RoleBasedAuthorizationService

CIM_Role

New:

CIM_AccountCapabilities

CIM_AccountManagementCapabilities

CIM_AccountSettingData

CIM_ElementSecuritySensitivity

CIM_IdentityManagementService

CIM_IdentitySecurityClearance

CIM_OrgEntityManagementService

CIM_PrivilegeManagementCapabilities

CIM_SecuritySensitivity

Version 2.15:

New:

CIM_RoleBasedManagementCapabilities

Version 2.16:

Change:

CIM_AccountManagementService

New:

CIM_RemoteIdentity

CIM_KerberosCredential

CIM_NamedCredential

CIM_SharedCredential

CIM_SignedCredential

CIM_UnsignedCredential

Deprecated:

CIM_CASignsPublicKeyCertificate

CIM_IKESecretIsNamed

CIM_KDCIssuesKerberosTicket

CIM_KerberosTicket

CIM_LocallyManagedPublicKey

CIM_ManagedCredential

CIM_NamedSharedIKESecret

CIM_PublicKeyCertificate

CIM_SharedSecretIsShared

CIM_UnsignedPublicKey

CIM_SharedSecret